

# Showcase the possibilities

Pro Ascobloc sp. z o.o.

# About us

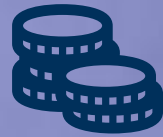
ascobloc®



**30 years**  
experience on the  
Polish market



**+14000**  
m<sup>2</sup> of production  
area



**~100,000,000**  
PLN of annual  
revenue



**+250**  
qualified employees



**+200**  
machinery and  
equipment



ascobloc®

# Our Brands

ascobloc®

**DEBAG**

alexandersolia

Food processing



# Industries



**HoReCa**



**Medicine**



**Military Industry**



**FMCG**



**Food Industry**



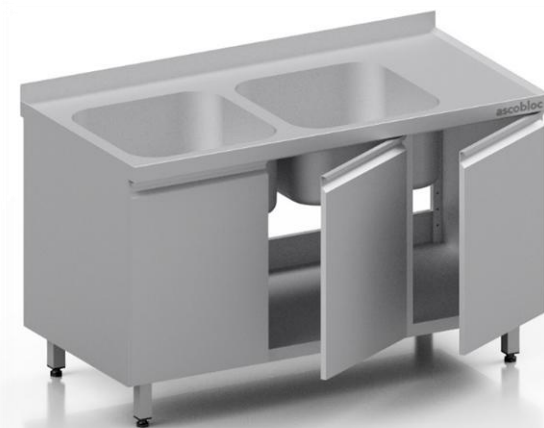
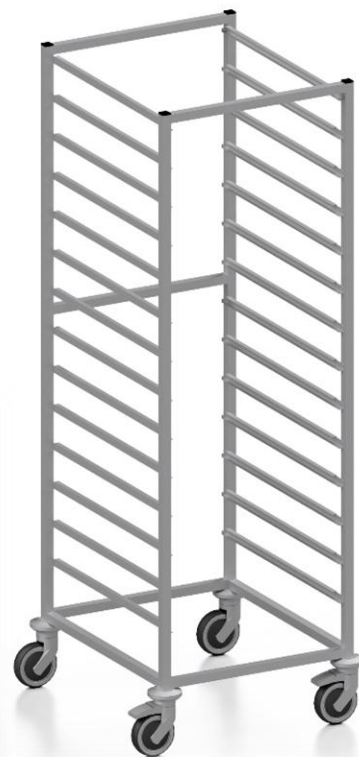
**Advertisement**



**Construction**

# Stainless-steel furniture

Made of stainless-steel grade 1.4301 (DIN)  
chromium-nickel



# Refrigeration equipment

## Tables, bases, cooling tubs, saladetta, display cabinets

- GN standard
- electronic temperature control
- Self-closing doors



# Selected projects



# ODRé Restaurant



# Machinery Park

ascobloc®

**1 CAD ENGINEERING**

**2 MACHINING**

**3 BENDING**

**4 LASER CUTTING**

**5 WELDING**

**6 GRINDING**

**7 ASSEMBLY**

# CAD Engineering

- **Engineering-first approach**

Every project starts with full integration into our production processes

- **Complete technical documentation**

Our engineers turn your vision into ready-to-produce specifications

- **End-to-end support**

Production rollouts, data updates, cost controlling, and process optimization advisory

- **Flawless execution, every time**

A seamless industrial cooperation model designed for efficiency and zero errors

The logo for ascobloc, featuring the company name in a white, lowercase, sans-serif font on a dark blue rectangular background.

# Machining

**We manufacture parts with complex geometry and tight dimensional tolerances.**

**Our machine park enables the highest-precision machining of components.**

## **a. Turning centers:**

- a. OKUMA LT-2000EX
- b. OKUMA LB3000 EX MYC950
- c. OKUMA LB15
- d. OKUMA GENOS L300
- e. E-MOKUMA GENOS L200 E-M
- f. DOOSAN LYNX 2100LM
- g. DOOSAN LYNX 220LM
- h. DOOSAN LYNX 2100LY
- i. DOOSAN LYNX 2100LM

## **b. Milling centers:**

- a. DOOSAN DNM 5700
- b. HURCO VMX 60 SRTi
- c. HURCO VMX 42 SRTi
- d. HURCO VMX 42t
- e. HURCO BMC 4020
- f. HURCO VMI
- g. HAAS MIKRON VCE750

# Bending

We guarantee **100% repeatability of angles** and dimensions, which is critical in serial production of components.

Processes are carried out on automated bending centers and press brakes, ensuring precision **without the risk of surface damage.**

- a. BYSTONIC 3P 150X 3100 PRESS BRAKE
- b. AMADA HG 1303 PRESS BRAKE
- c. SALVAGNINI P4 LEAN BENDING MACHINE WITH AUTOMATIC LOADING AND UNLOADING (SERIES)
- d. TRANSFLUID DB 650 ST SPS MANDREL BENDER



# Laser Cutting

We combine **Fiber technology efficiency with 3D cutting precision**, delivering parts with perfect edges requiring no further processing.

This guarantees maximum material utilization and shape repeatability, directly reducing costs and lead times for serial orders.

## a. Laser cutting & punching:

- a. TRUMATIC 6000 L LASER PUNCH COMBINATION
- b. TRUMATIC 7000 LASER PUNCH COMBINATION
- c. TRULASER CELL 7040 3D LASER
  - a. 2D cutting
  - b. 3D cutting
- d. TRUMPF TRULASER 5030 FIBER (L68)

## b. Milling centers:

- a. ADIGE LT 7 LASERTUBE

# Welding

We combine the precision of robotic welding (TIG and 3D LASER) with the expertise of our skilled workforce to ensure 100% repeatability for every component.

This blend of technology and manual control enables fast, serial order fulfillment while guaranteeing the highest quality and durability of joints, essential for maintaining hygiene standards.

- a. PANASONIC TA-1800G3 WELDING ROBOT
- b. PANASONIC TA-1600G3 WELDING ROBOT
- c. 3D LASER
- d. 8 Manual Welding Stations



# Grinding

We use precision automatic grinding machines (COSTA, Kuhlmeier) and skilled manual methods to ensure fast and accurate surface finishing of components.

Our process includes effective deburring, guaranteeing perfect smoothness and edge aesthetics — essential for parts requiring high hygiene standards and assembly safety.

- a. COSTA MA2 - CVC 1160 GRINDING MACHINE
- b. KUHLMAYER ZBS 3 BELT GRINDER



**Let's talk about  
your project!**